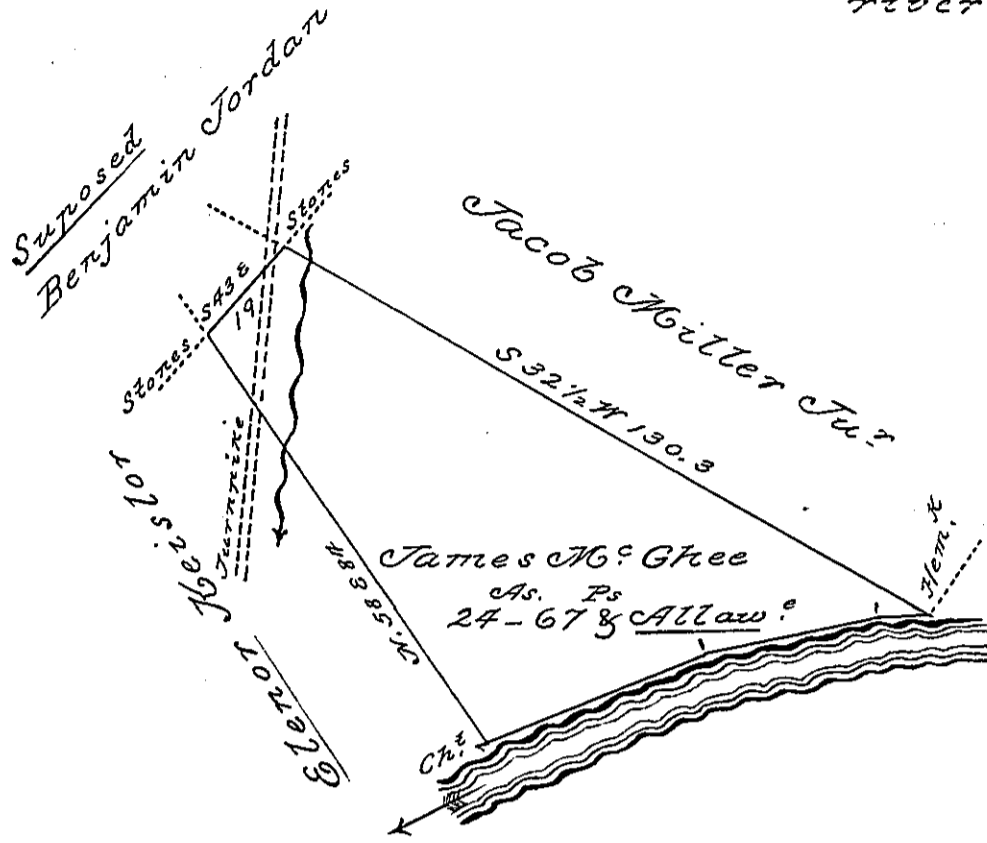


Courses and Distances
from Mem^r. Down the
river to the Ches^r.



N 5 E -- 9
N 7 W - 31
N 16 W - 41

81 Ps

A Draught of a Tract of Land Situated in
Lawrance Township Clearfield County on the
South Side of West Branch of Tusquehanna
River Containing Twenty Four Acres and Six
ty Seven Perches and the Usual Allawance of
Six per Cent for Roads &c. Surveyed the 2nd Day
of September 1830 in pursuance of his Warrant
bearing Date the 1st Day of July 1830 for 50 Acres
to Jacob Spangler Esqr. } David Ferguson D. S.
Surveyor General }

Note the above Survey is the Land the Warrant
Calls for but Claimed by Thomas Reed on an Im-
provement title -

D. F. D. S.

IN TESTIMONY that the above is a copy of the original remaining on file in the
Department of Internal Affairs of Pennsylvania, made con-
formably to an Act of Assembly approved the 16th day of
February, 1833, I have hereunto set my Hand and caused
the Seal of said Department to be affixed at Harrisburg, this

Fifth day of January 1897-

James W. Latta
Secretary of Internal Affairs.